

Melville, New York

Ruland Road



FRONT ELEVATION

12,000 Square Feet, Divisible

Approved drive thru available

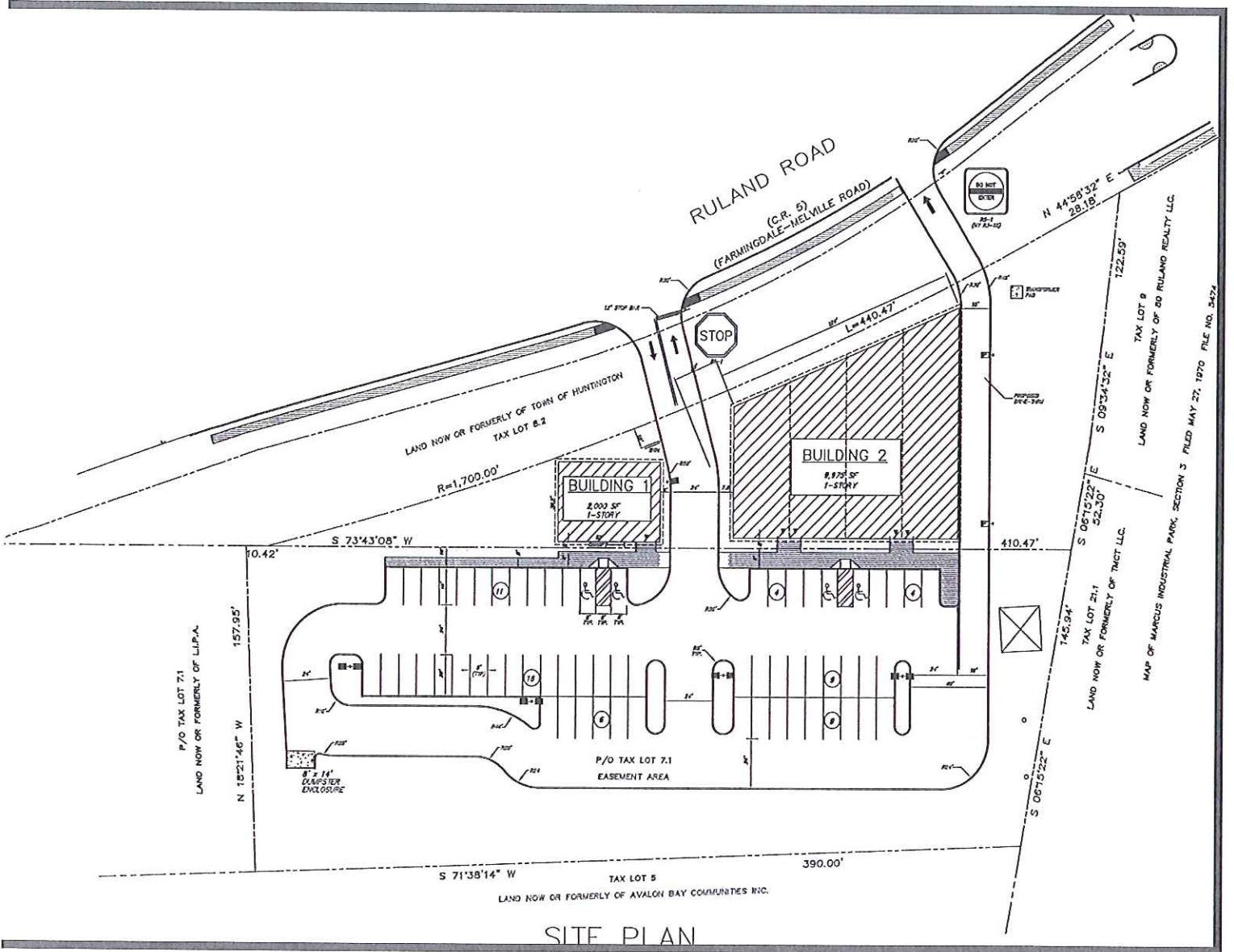
Adjacent to Newsday and numerous residential projects

Large day time population

FIRST DEVELOPMENT CORPORATION
COMMERCIAL REAL ESTATE
1328 MOTOR PARKWAY
HAUPPAUGE, NEW YORK 11749
PHONE (631) 234-3200 / FAX (631) 234-3695
Email: rs@fdcrealty.com

SITE PLAN

RULAND ROAD, MELVILLE, NY



SITE PLAN

AERIAL

